

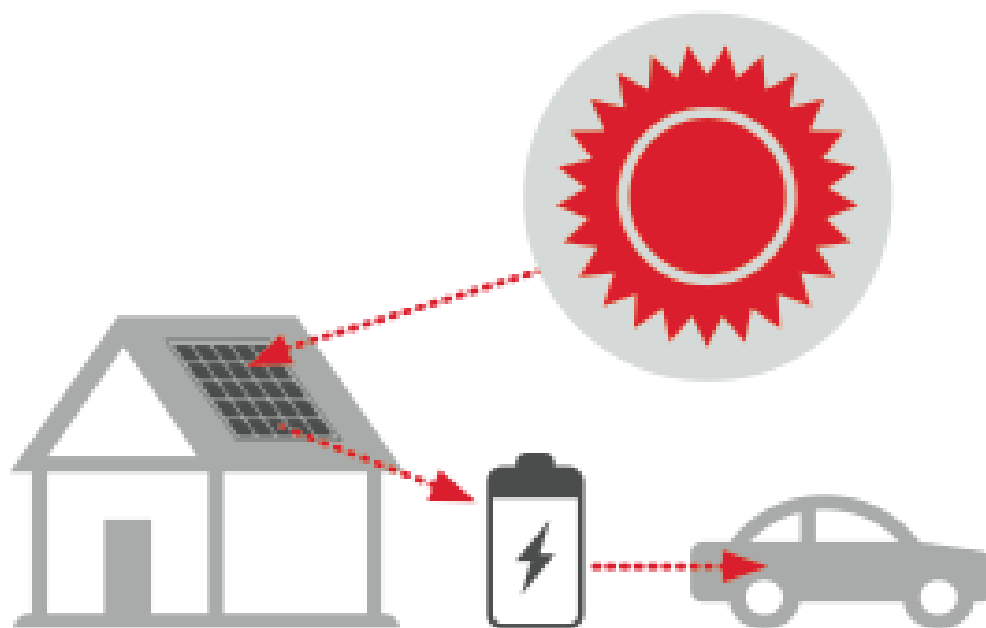
# Energy prosumers and infrastructure regulation: some initial observations from Australia

Dr Angela Daly,  
Vice Chancellor's Research Fellow  
Faculty of Law, Queensland University of Technology

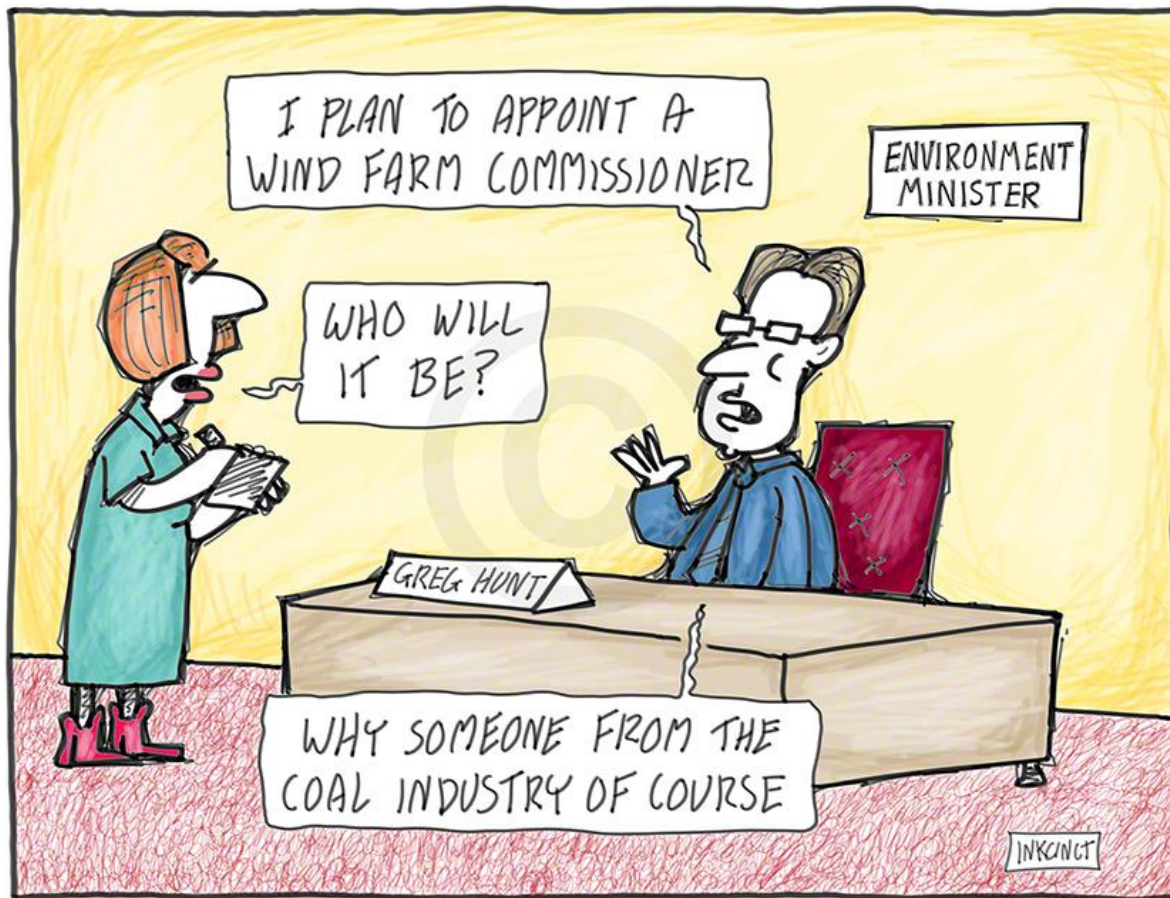


**PROSUMERS**  
PRODUCERS + CONSUMERS





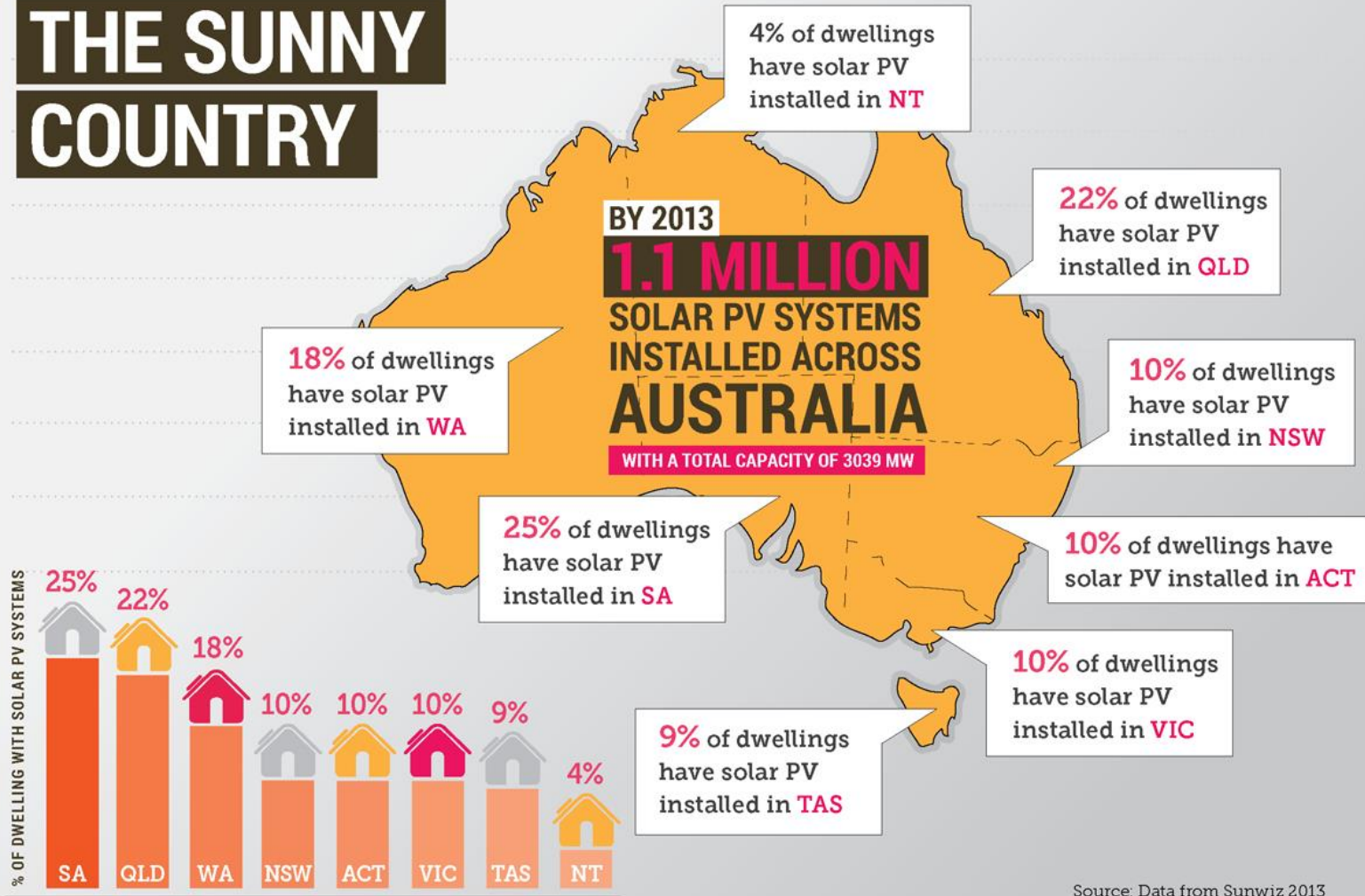






*Coal. It's an amazing thing.*

# THE SUNNY COUNTRY



# Flashpoints

- Feed-in tariffs
- Grid connection
- Network infrastructure charges



# Australia is an interesting case study





**Thank you!**

Angela.daly@qut.edu.au