

Urban nodes along the T-ENT network: who can be the coordinator

Alessandro Delpiano,
director of territorial planning and sustainable mobility department

TERRITORIAL CONTEXT

OVERVIEW, INTEGRATED PLANNING AND OBJECTIVES

How much are boudaries important for planning?





Torino

Milano

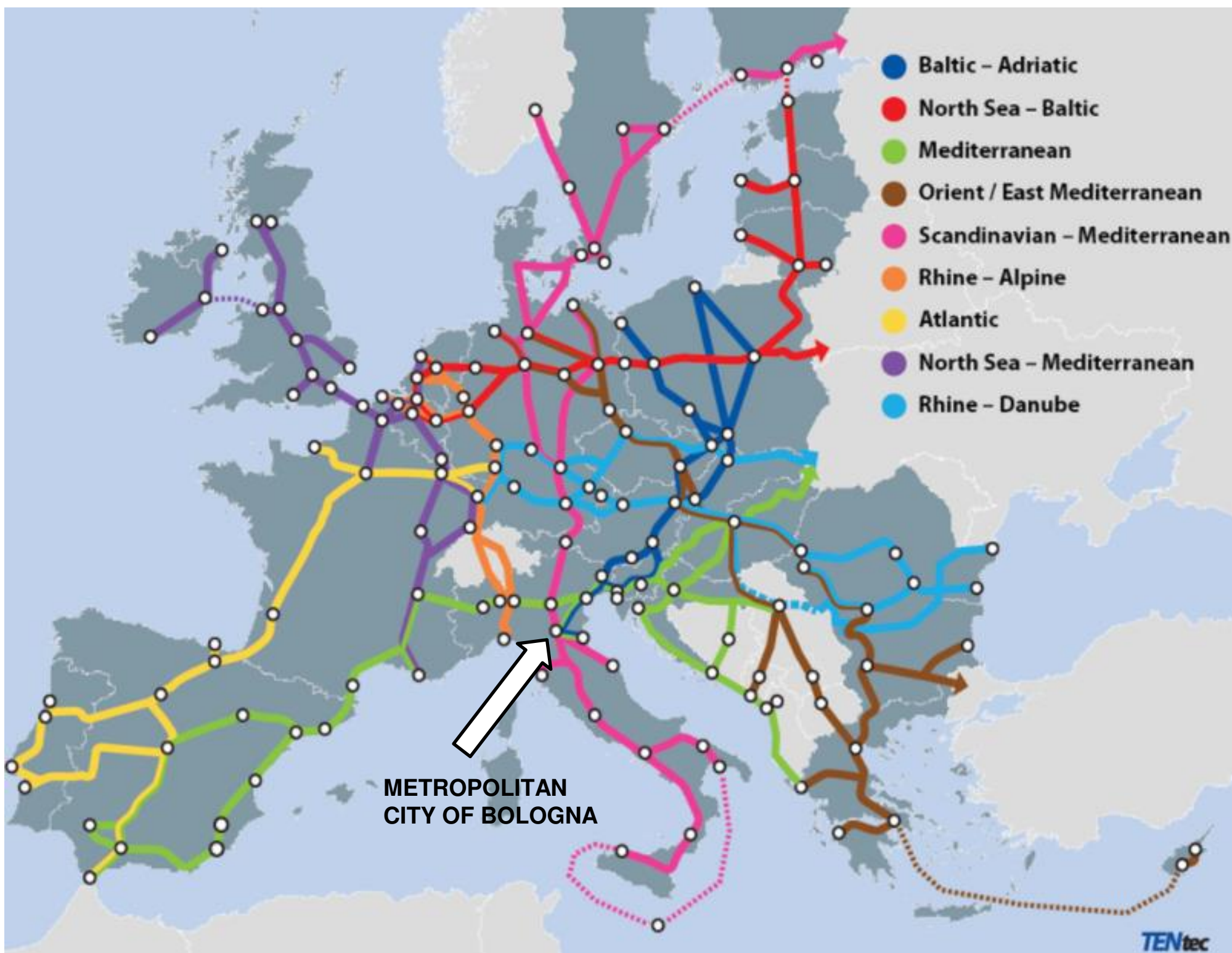
Venezia

Genova

Bologna

Firenze

Ancona



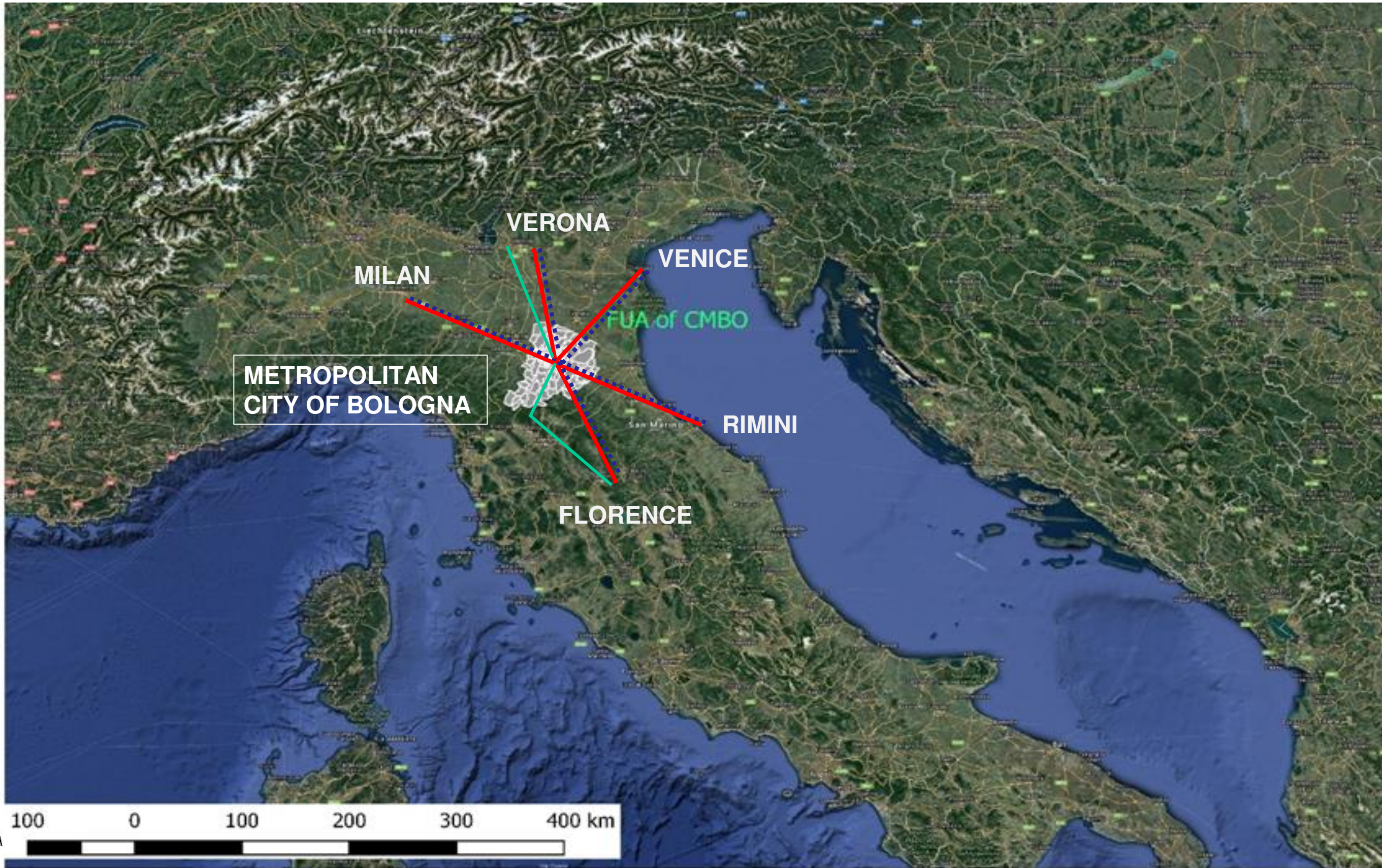
A satellite map of the Emilia-Romagna region in Italy. The map shows the region's irregular white outline, the larger white outline of the Metropolitan City of Bologna, and the dashed white outline of the Municipality of Bologna. A solid red line runs diagonally from the top-left to the bottom-right across the map. The text labels are in white. The sea is visible on the right and bottom-left sides.

Regione Emilia-Romagna

Città Metropolitana di
Bologna

Comune di Bologna

THE METROPOLITAN CITY OF BOLOGNA IN THE NATIONAL CONTEXT



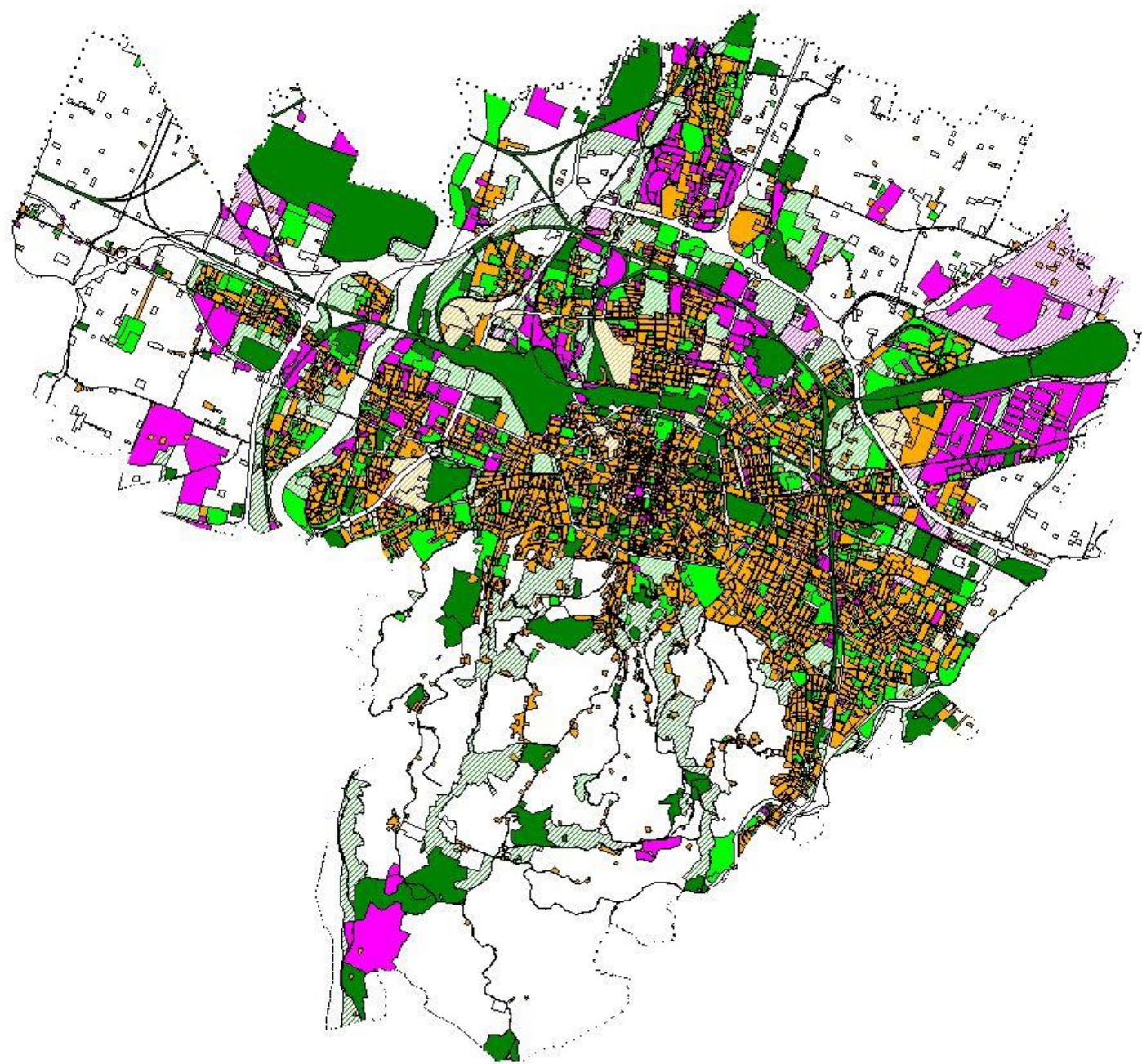












ATTUATE

-  **RESIDENZA**
-  **INDUSTRIA E TERZIARIO**
-  **ATTREZZATURE PUBBLICHE TERRITORIALI**
-  **ATTREZZATURE PUBBLICHE URBANE**

DI PROGETTO

-  **RESIDENZA**
-  **INDUSTRIA E TERZIARIO**
-  **ATTREZZATURE PUBBLICHE TERRITORIALI**
-  **ATTREZZATURE PUBBLICHE URBANE**

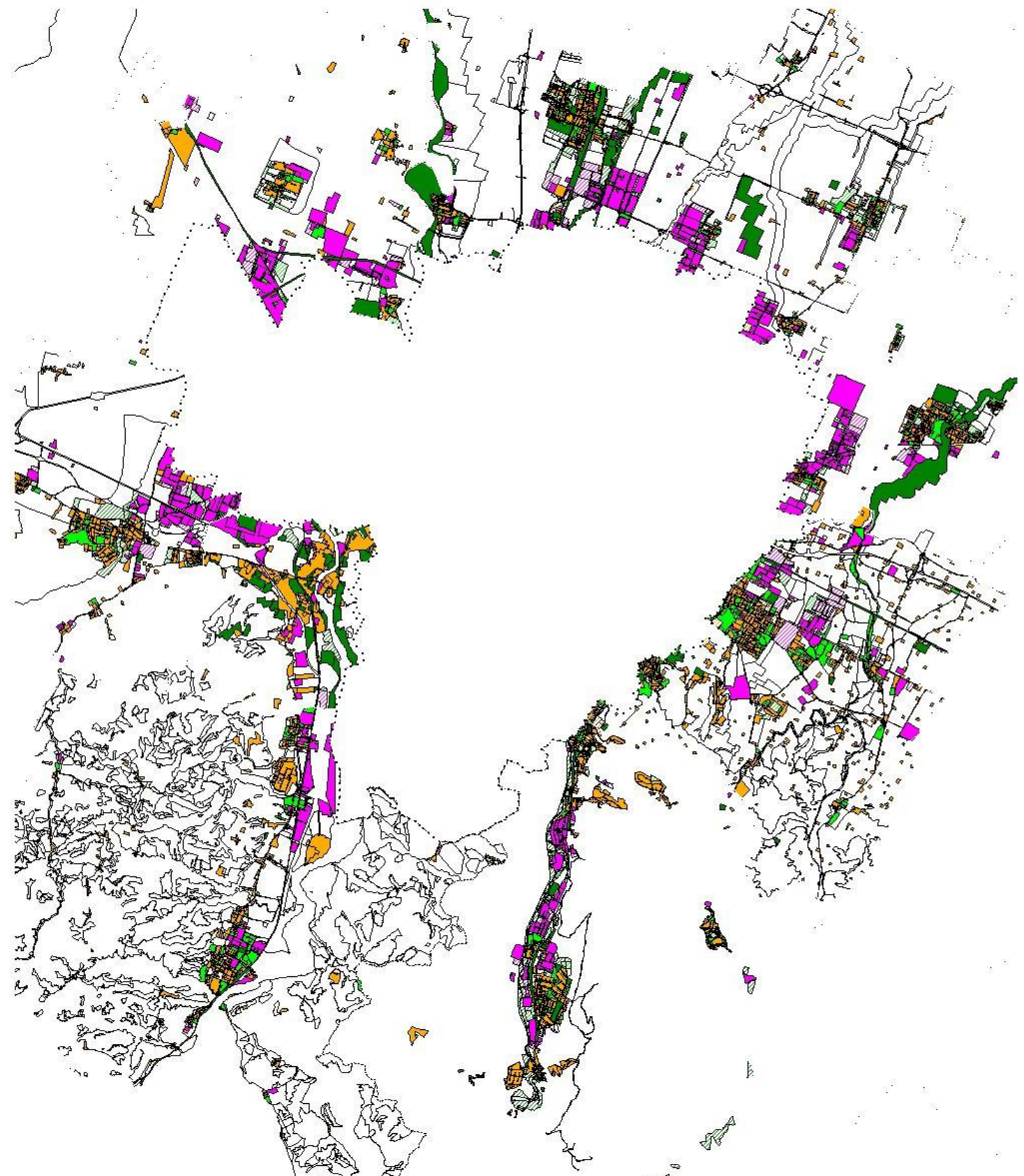


ATTUATE

-  **RESIDENZA**
-  **INDUSTRIA E TERZIARIO**
-  **ATTREZZATURE PUBBLICHE TERRITORIALI**
-  **ATTREZZATURE PUBBLICHE URBANE**

DI PROGETTO

-  **RESIDENZA**
-  **INDUSTRIA E TERZIARIO**
-  **ATTREZZATURE PUBBLICHE TERRITORIALI**
-  **ATTREZZATURE PUBBLICHE URBANE**



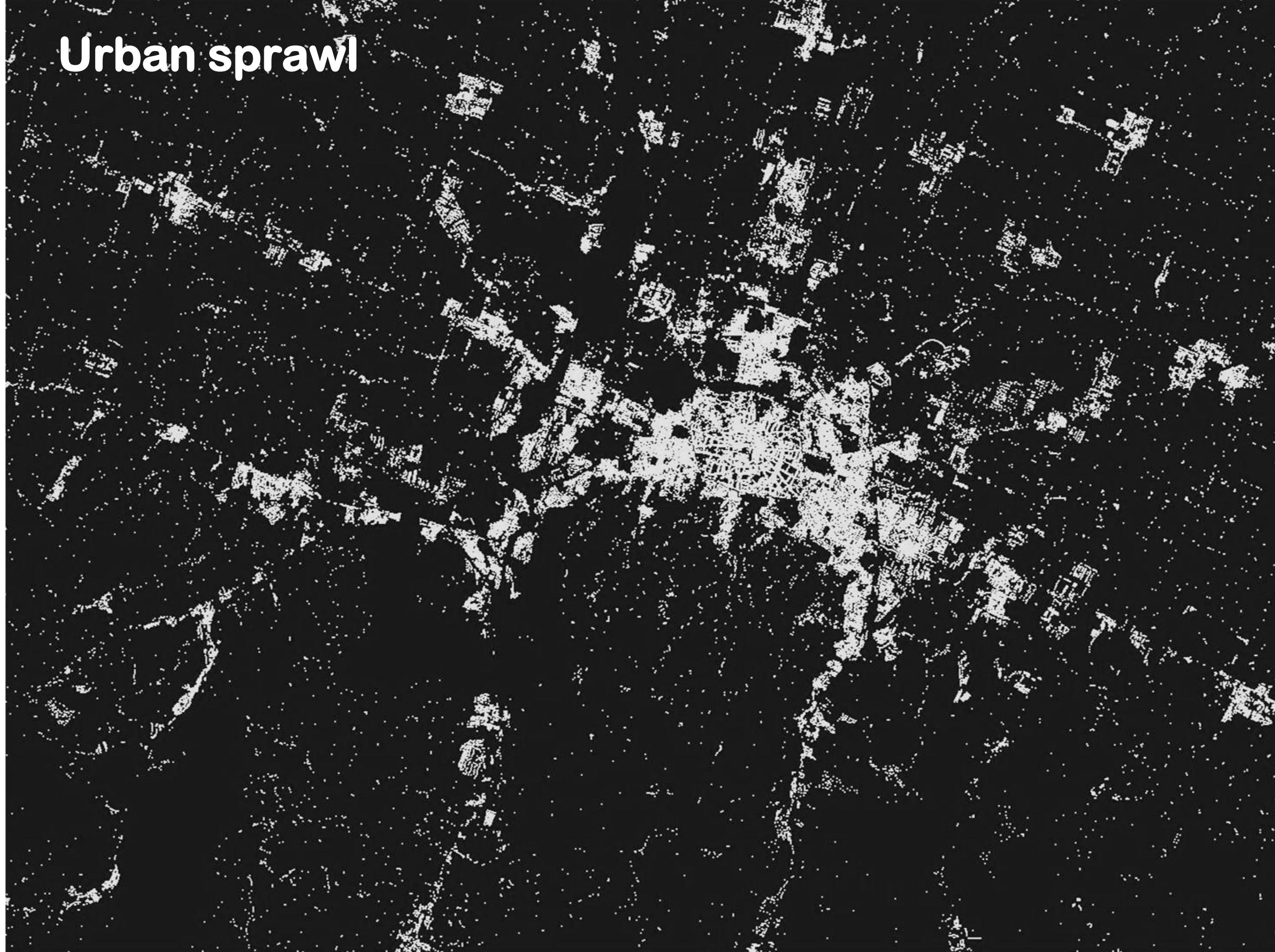
ATTUATE

-  **RESIDENZA**
-  **INDUSTRIA E TERZIARIO**
-  **ATTREZZATURE PUBBLICHE TERRITORIALI**
-  **ATTREZZATURE PUBBLICHE URBANE**

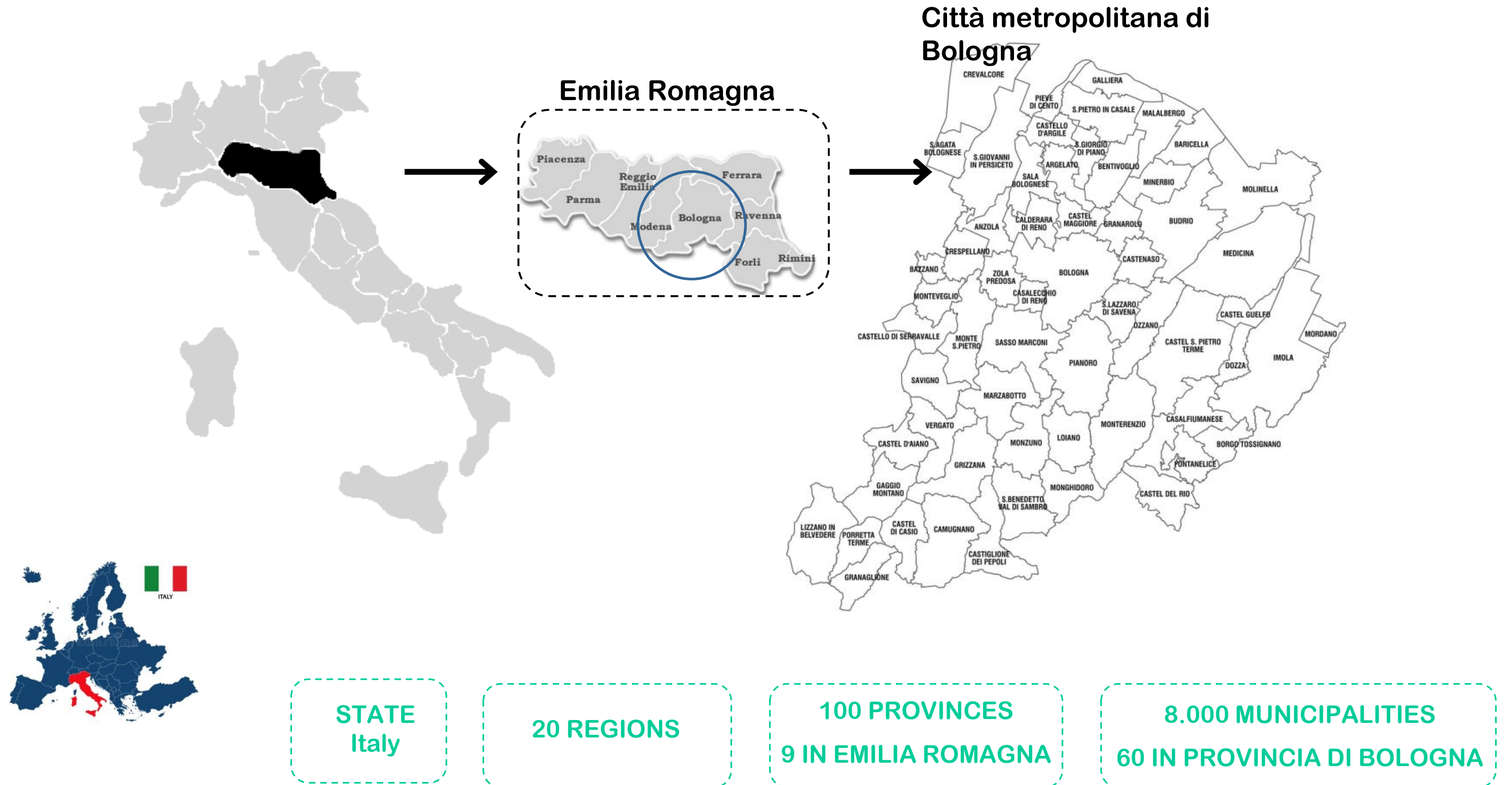
DI PROGETTO

-  **RESIDENZA**
-  **INDUSTRIA E TERZIARIO**
-  **ATTREZZATURE PUBBLICHE TERRITORIALI**
-  **ATTREZZATURE PUBBLICHE URBANE**

Urban sprawl



General Structure of Institutional System until 2014

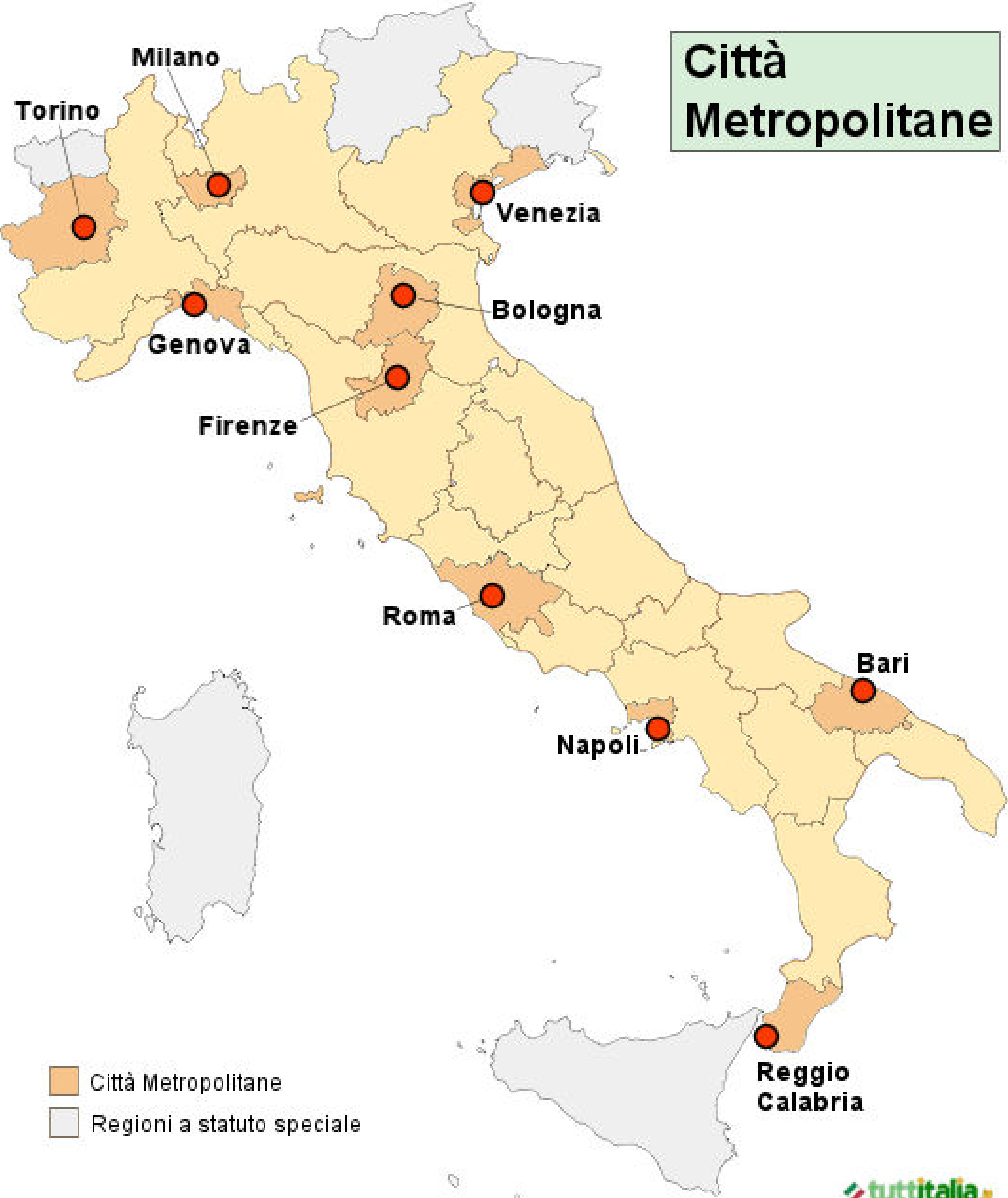


1st January 2015

Institution of 14

Metropolitan Cities

1st January 2015 – Institution of 10 Metropolitan Cities



MAIN FUNCTIONS OF METROPOLITAN CITIES

- ✓ **metropolitan strategic planning**
- ✓ **metropolitan territorial planning**
- ✓ **Sustainable mobility and infrastructure planning**
- ✓ **economic and social development**

- ✓ **school buildings**
- ✓ **roads management**

SUMP in metropolitan Cities all except Reggio Calabria e Messina



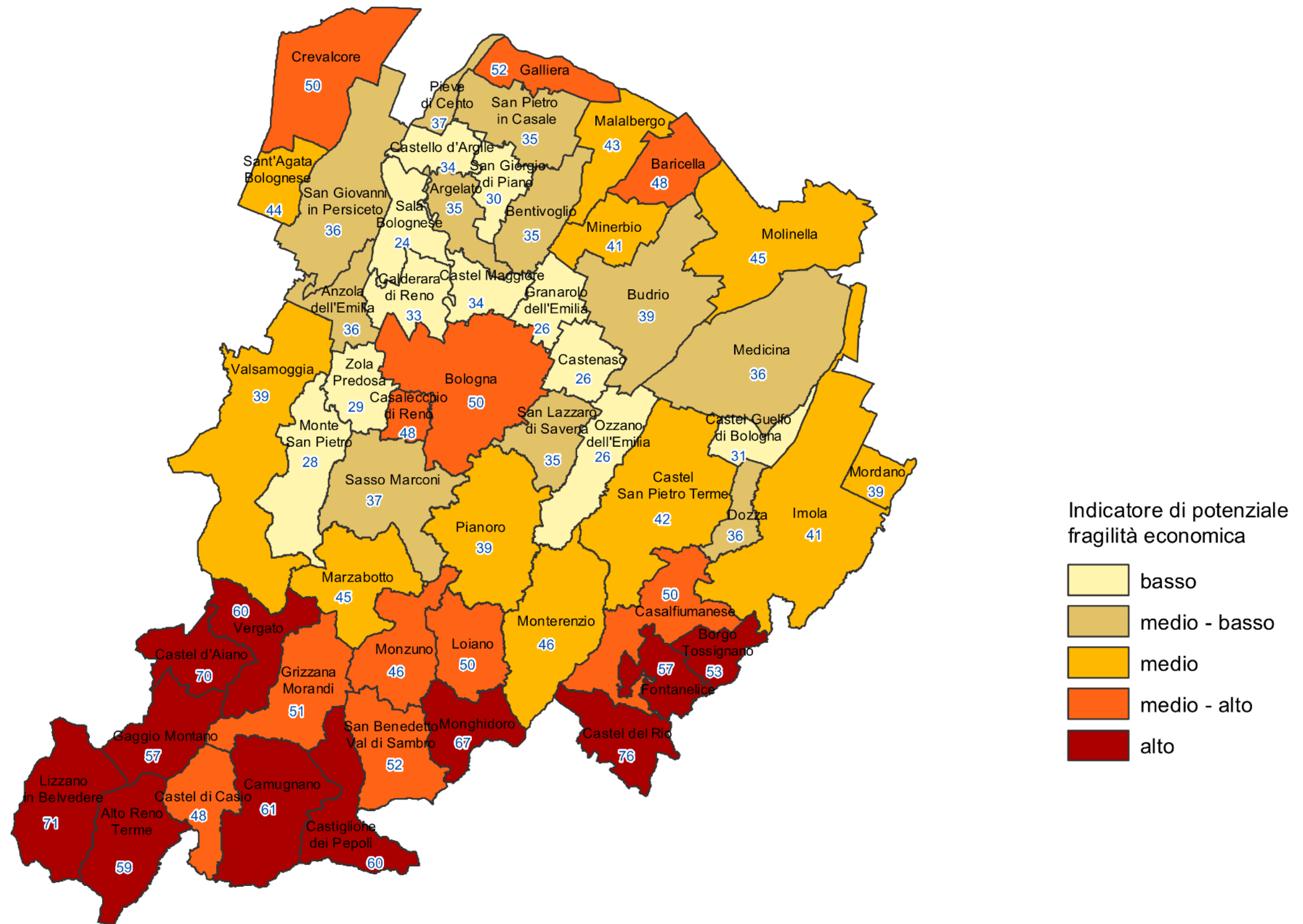
PUMS integrati Città metropolitana e comune capoluogo



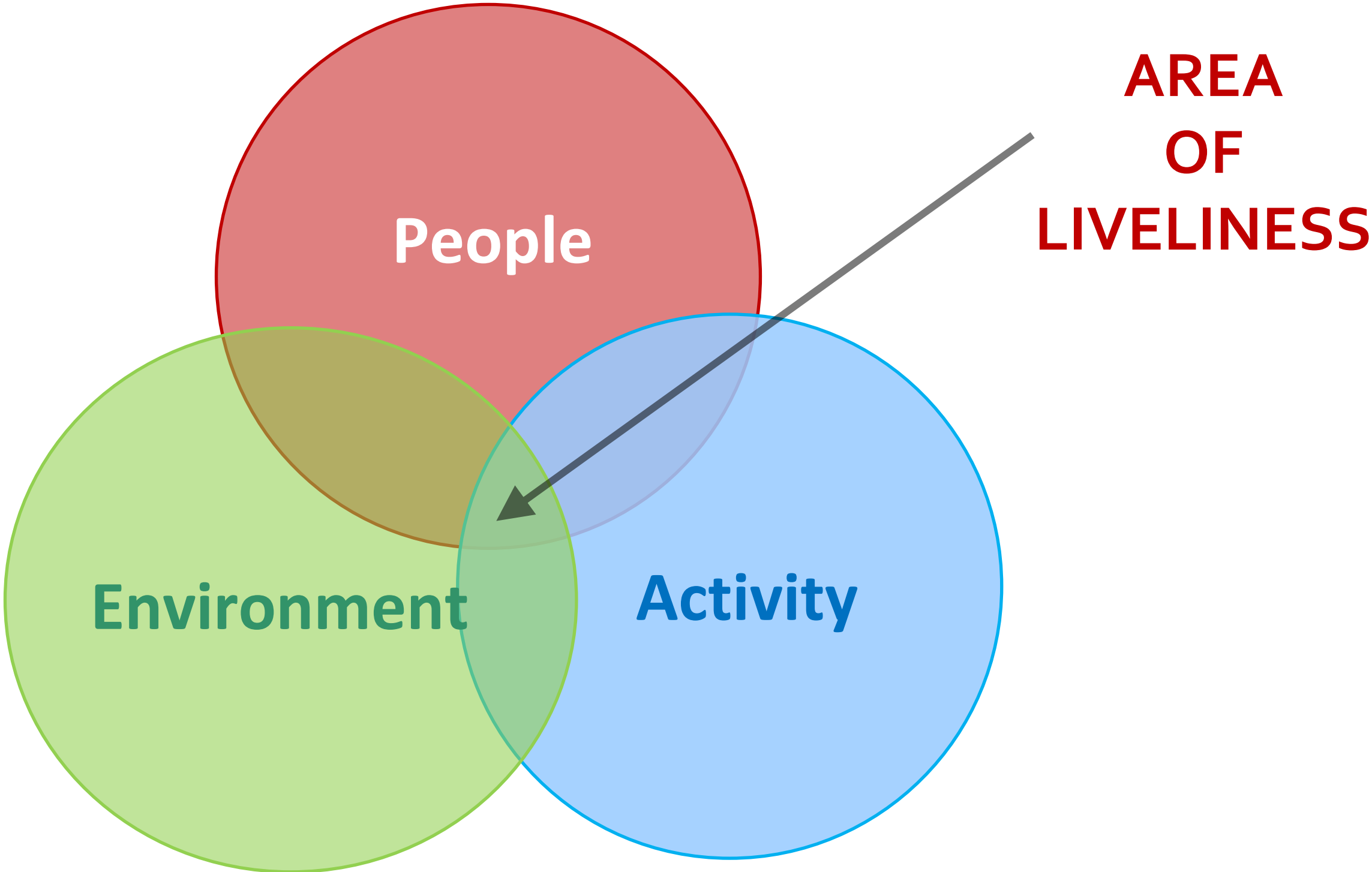
GOVERNMENT BODIES

- ✓ The **Metropolitan Mayor** is the mayor of the Municipality of Bologna
- ✓ the **Metropolitan Council** composed of 18 councilors, elected with the electoral system of second degree by administrators themselves of all the Municipalities
- ✓ **Deputy Metropolitan mayor from Councilors**
- ✓ the **Metropolitan Conference** composed by all Mayors
- ✓ the **Presidence Office** composed of the 7 Presidents of the Unions of Municipalities

Città metropolitana di Bologna. Indicatore sintetico di potenziale fragilità



A CITY BURSTING WITH LIVELINESS



**AREA
OF
LIVELINESS**

An integrated planning system



PUMS
BOLOGNA
METROPOLITANA

Piano Urbano Mobilità Sostenibile

2020



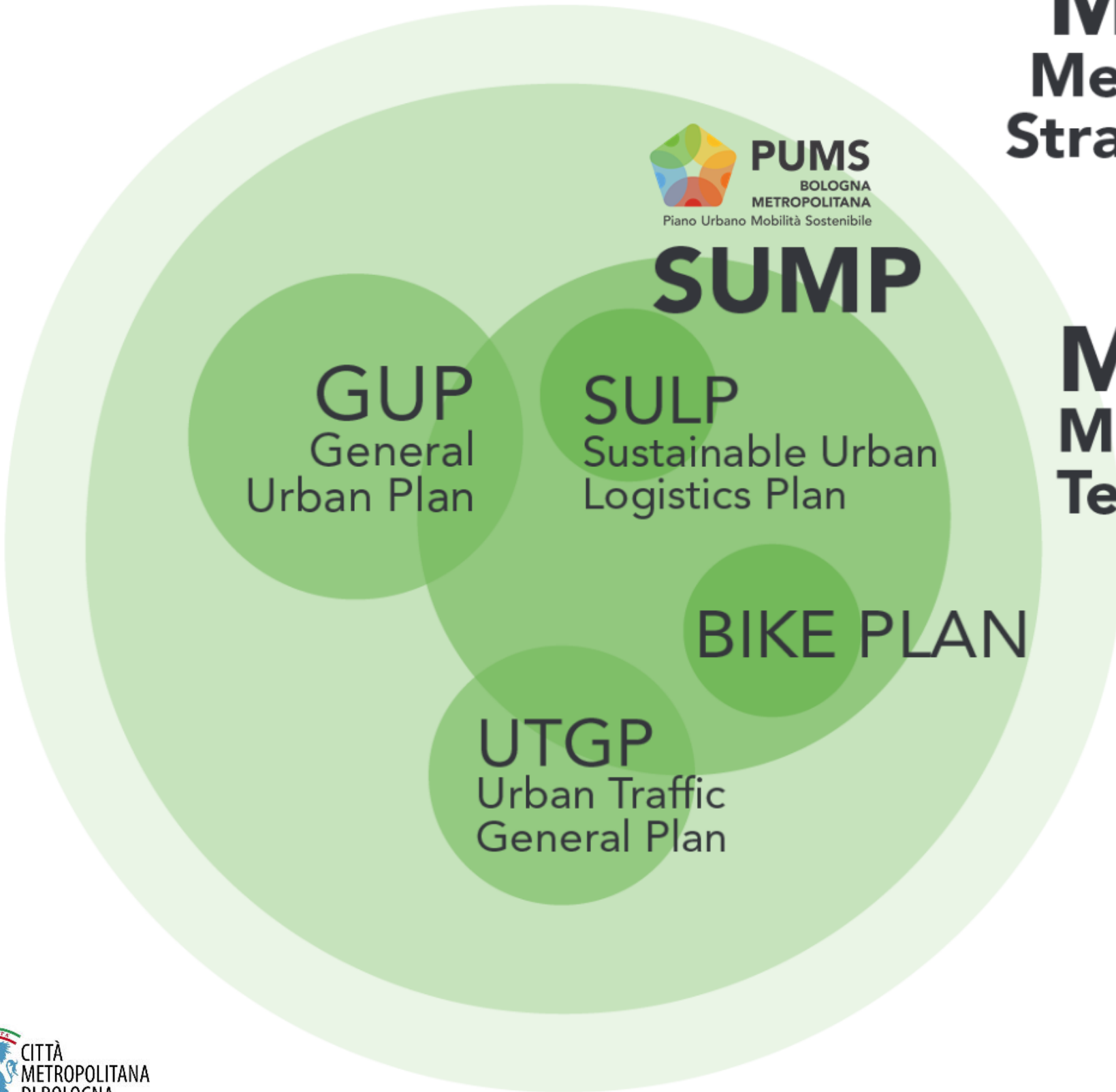
bologna
piano strategico
metropolitano

2019



2021

MSP 2.0 Metropolitan Strategic Plan



MTP Metropolitan Territorial Plan



METROPOLITAN CITY AND BOLOGNA MUNICIPALITY



Virginio Merola Metropolitan City Mayor
Marco Monesi Metropolitan City Councilor



Irene Priolo Deputy Mayor for Mobility
Valentina Orioli Deputy Mayor for Urban Planning

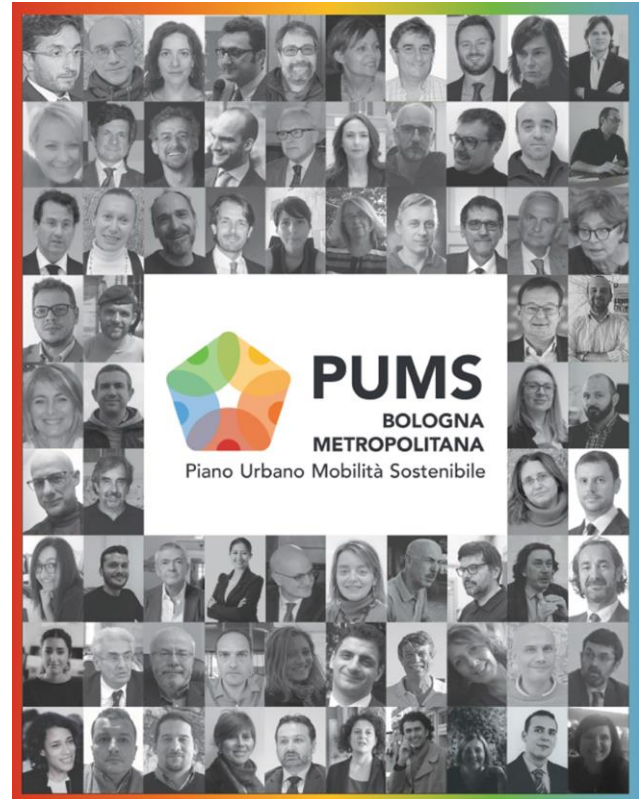


Ennio Cascetta President
Vincenzo Balzani
Pierluigi Coppola
Carles Llop
Maria Prezioso

CREATION OF A SUMP SCIENTIFIC COMMITTEE

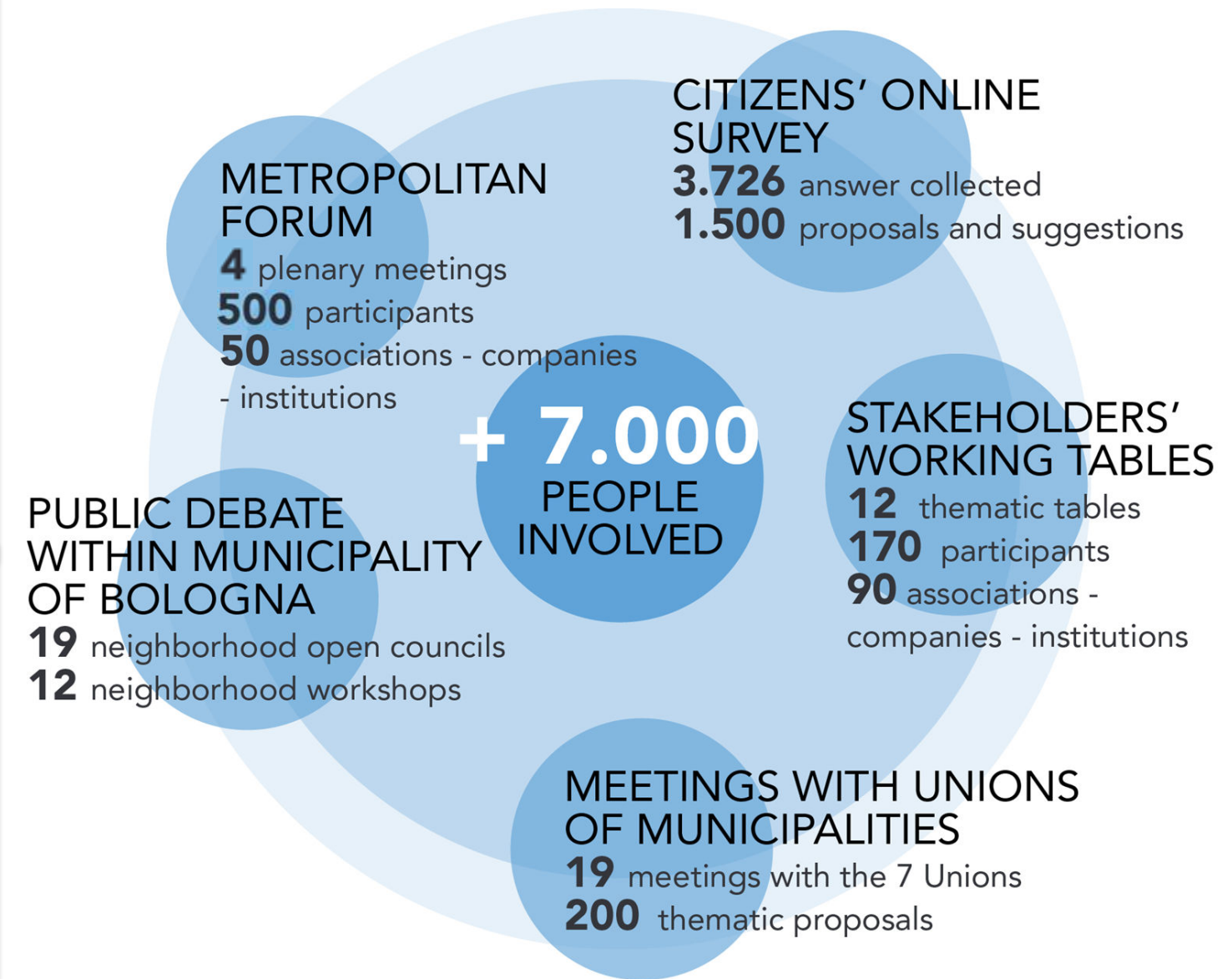
Sustainable Urban Mobility Planning in Metropolitan Regions
 Sustainable urban mobility planning and governance models in EU metropolitan regions

How to create a SUMP scientific committee?
 The scientific committee is a key element in the SUMP process. It is a multidisciplinary body that provides technical advice and ensures the coherence of the plan. It is composed of experts from various fields, including urban planning, mobility, environment, and socio-economic aspects. The committee's role is to provide a general technical advice to the Metropolitan City and the Municipality of Bologna.



PUMS BOLOGNA METROPOLITANA
 Piano Urbano Mobilità Sostenibile

ALIGNEMENT IN SUMP PARTECIPATION PROCESS

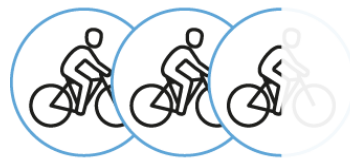


ALL STAKEHOLDERS INVOLVED FROM THE VERY START INTO A LOCAL FORUM FOR SUSTAINABLE MOBILITY

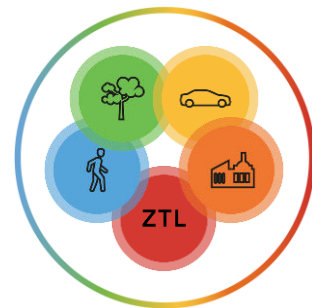
Metropolitan Public Transport TPM **44%**



Cycling Mobility_ **16%**



Shared Public Space **13%**



Road network **9%**

Smart mobility **7%**

PULS – Logistics **4%**

Implementation **2%**

Objectives **2%**

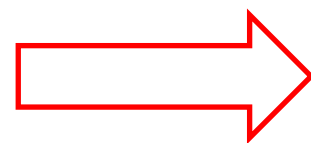
Territorial Planning **1%**



900 FORMAL CONTRIBUTIONS RECEIVED

80% ask for more sustainable mobility

Reaching many people during the plan definition phase was essential both to better the plan and to build collective and shared knowledge for its implementation



METROPOLITAN EQUALIZATION FUND

50% of charges for urban expansions goes to the
METROPOLITAN EQUALIZATION FUND

- 1. Land consumption (3% of urbanized territory)**
- 2. Metropolitan hubs (industry, retail, logistic, commercial center, functional poles, etc.)**



METROPOLITAN EQUALIZATION FUND



The new Metropolitan Territorial Plan declares that the Equalization Fund can be used to finance the

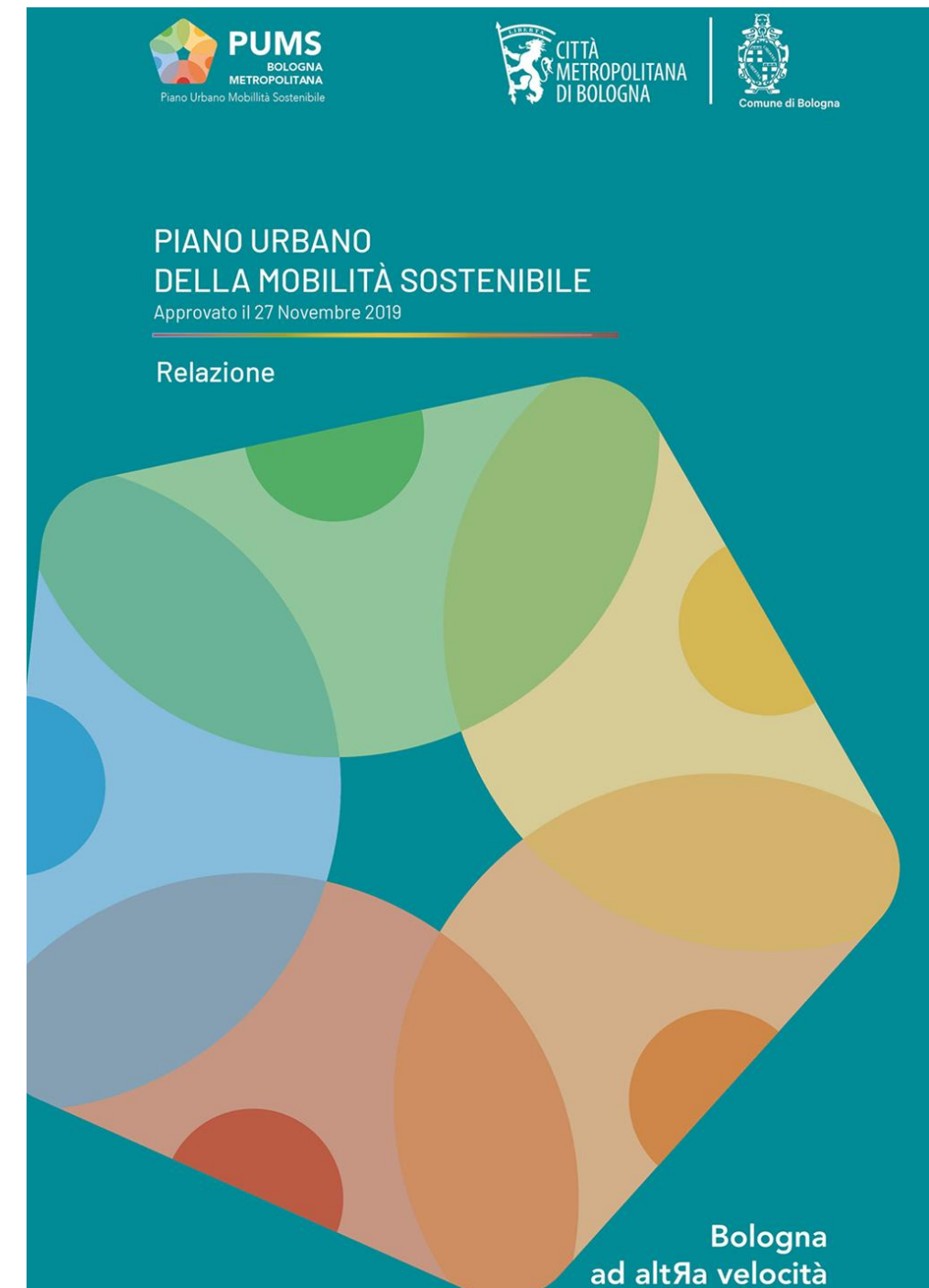
Urban Regeneration Programs and sustainable mobility

To support of those areas that present stronger social, economic or demographical fragilities

URBAN REGENERATION IN WHOLE METROPOLITAN AREA

CONVERGENZE METROPOLITANE	27 Projects	40 mil euros
ARCIPELAGO METROPOLITANO	27 Projects	45 mil euros
PIANI URBANI INTEGRATI	19 Projects	157 mil euros
PROGRAMMA DI RIGENERAZIONE 2023	18 Projects	2,5 mil euros
TOTAL	91 Projects	244,5 mil euros

- Urban and territorial planning and sustainable mobility
- Main network system of the Metropolitan Public Transport
- Cycling Mobility - Metropolitan Bike network
- Pedestrian mobility and shared space
- Innovative mobility and incentive policies
- Road network
- Sustainable Logistics –SULP (with a dedicated section)
- Actuation and implementation – timing, scenarios and resources (with a dedicated section)



THANKS FOR YOUR ATTENTION!