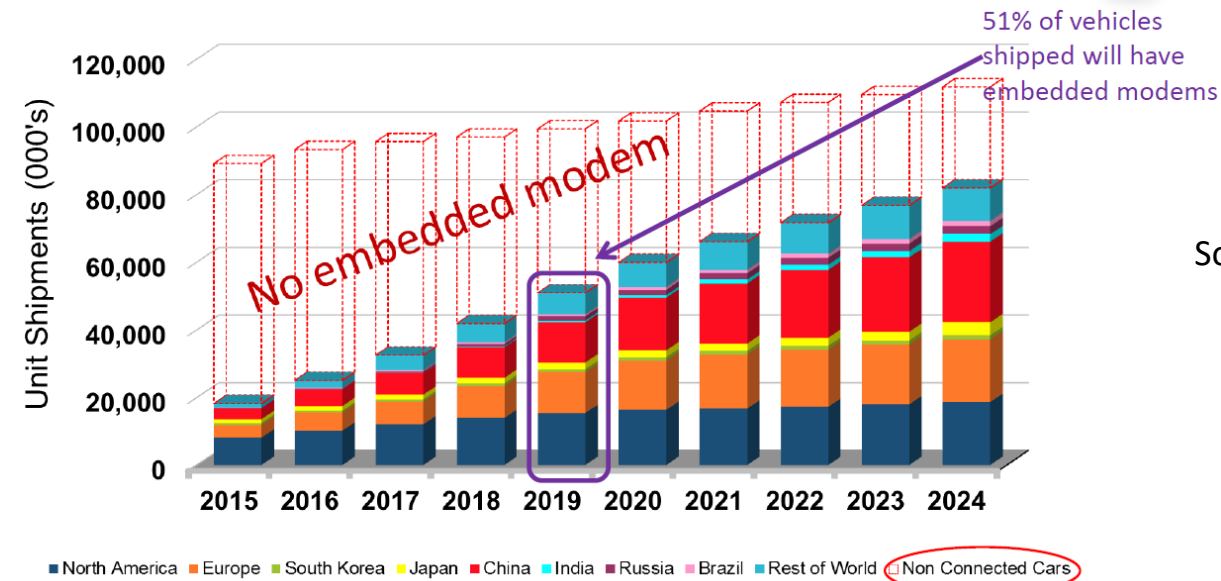


# V2X: the Path towards Self-Driving Vehicles

Prof. Javier Gozalvez, [j.gozalvez@umh.es](mailto:j.gozalvez@umh.es)

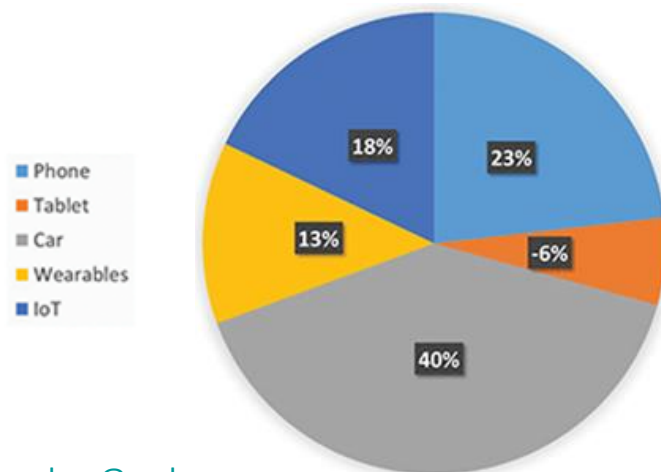
Universidad Miguel Hernández de Elche, Spain

# Connected vehicles: a reality



Source: A 5G Perspective on Connecting Cars, Roger C. Lancot, Strategy Analytics

AT&T in US: 32 million connected vehicles of 150 million total subscriptions



US Net-Add Device Distribution 9 months at 3Q 2018

Source: US Mobile Market Update Q1 2019, Chetan Sharma Consulting

# V2X: Vehicle to Everything Communications

ITS Central  
Station



Cooperative C-ITS systems

Vehicle to Infrastructure (V2I)

Vehicle to Vehicle (V2V):  
exchange of positioning, speed information,...

V2P



V2V

V2V

V2V

V2I



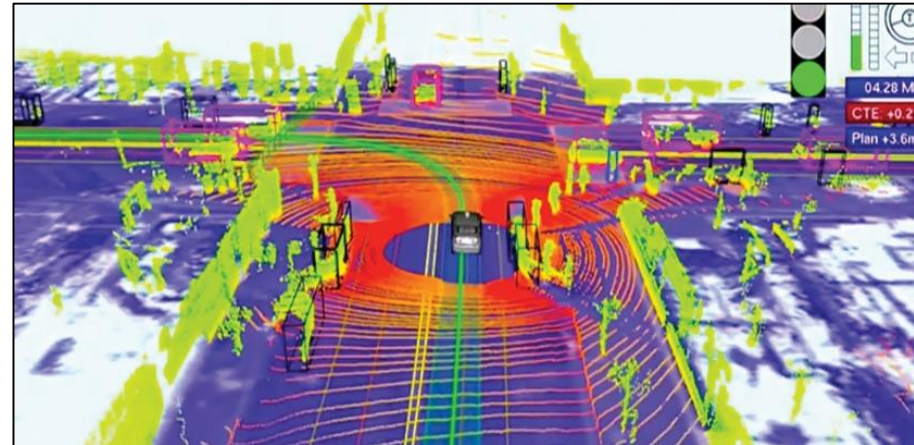
# V2X Applications



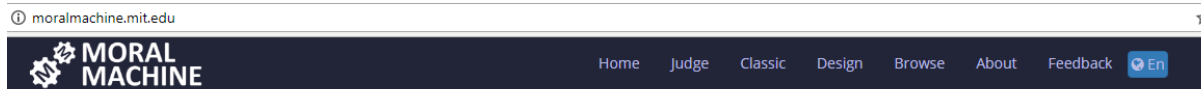
- Broadcasting awareness messages (few hundred bytes)
- Driver assistance services
  - Driver remains in control of the vehicle
  - No liability changes



# Autonomous Vehicles



# Autonomous Vehicles

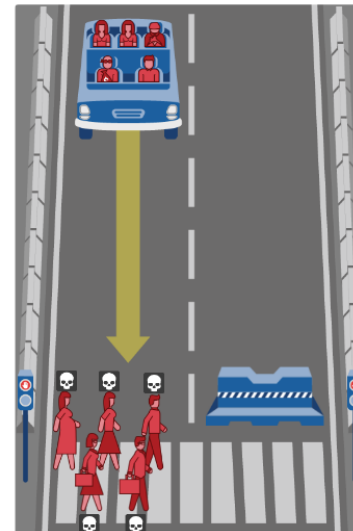
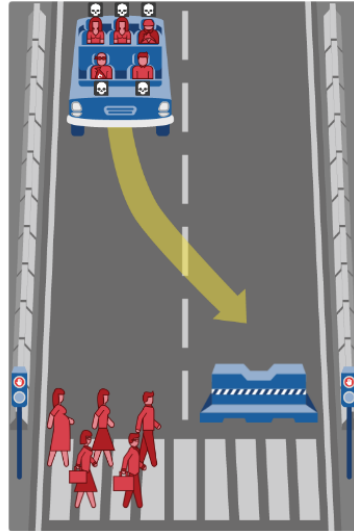


## What should the self-driving car do?

In this case, the self-driving car with sudden brake failure will swerve and crash into a concrete barrier. This will result in ...

Dead:

- 1 man
- 1 criminal
- 1 homeless person
- 2 women



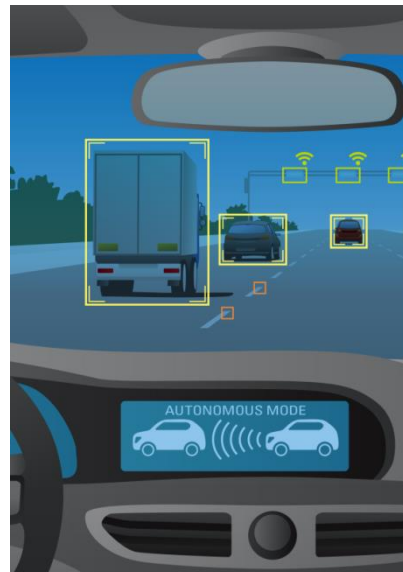
13 / 13

In this case, the self-driving car with sudden brake failure will continue ahead and drive through a pedestrian crossing ahead. This will result in ...

Dead:

- 1 pregnant woman
- 1 woman
- 1 man
- 1 female executive
- 1 male executive

Note that the affected pedestrians are flouting the law by crossing on the red signal.



**75%**  
of U.S. Drivers  
report feeling **"AFRAID"**  
to ride in a self-driving  
vehicle.



NewsRoom.AAA.com

# Autonomous Vehicles



The **majority (59%)** of U.S. drivers **want** autonomous technology in their next vehicle.



NewsRoom.AAA.com

# Challenge: Perception



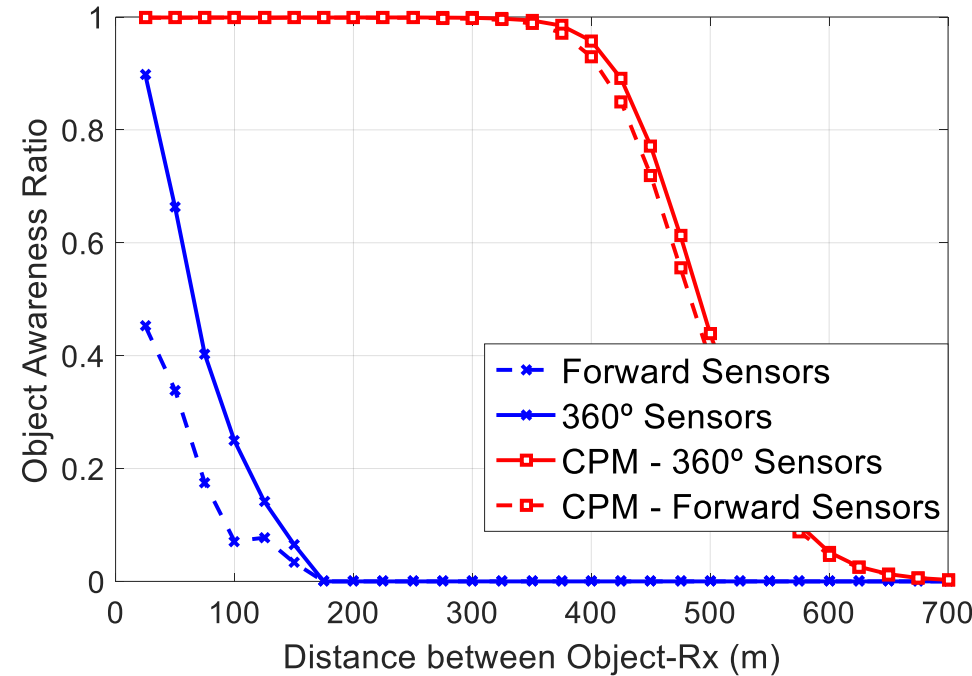
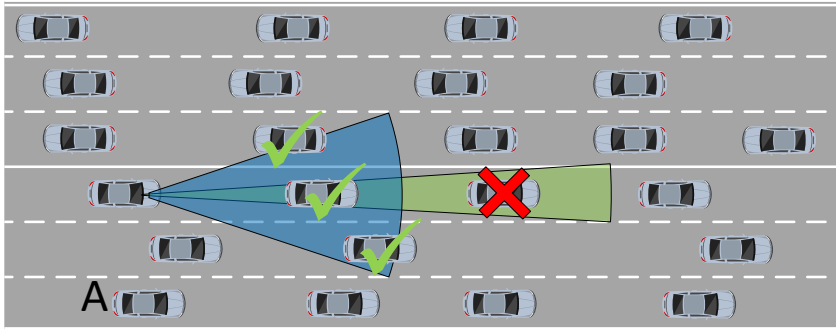
V2X to exchange sensed data  
Cooperative sensing or collective perception



# Collective Perception

- ETSI TR 103 562: Collective Perception Service

Only vehicles in Line of Sight can be detected



# Challenge: Automated Driving

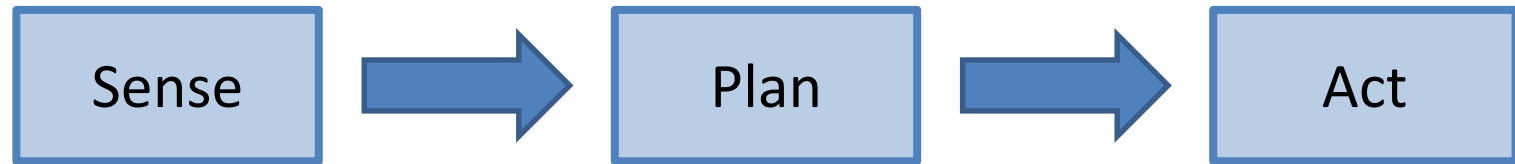


Perceive environment  
and create an abstract  
view

Calculate a plan to  
drive (i.e. trajectory)

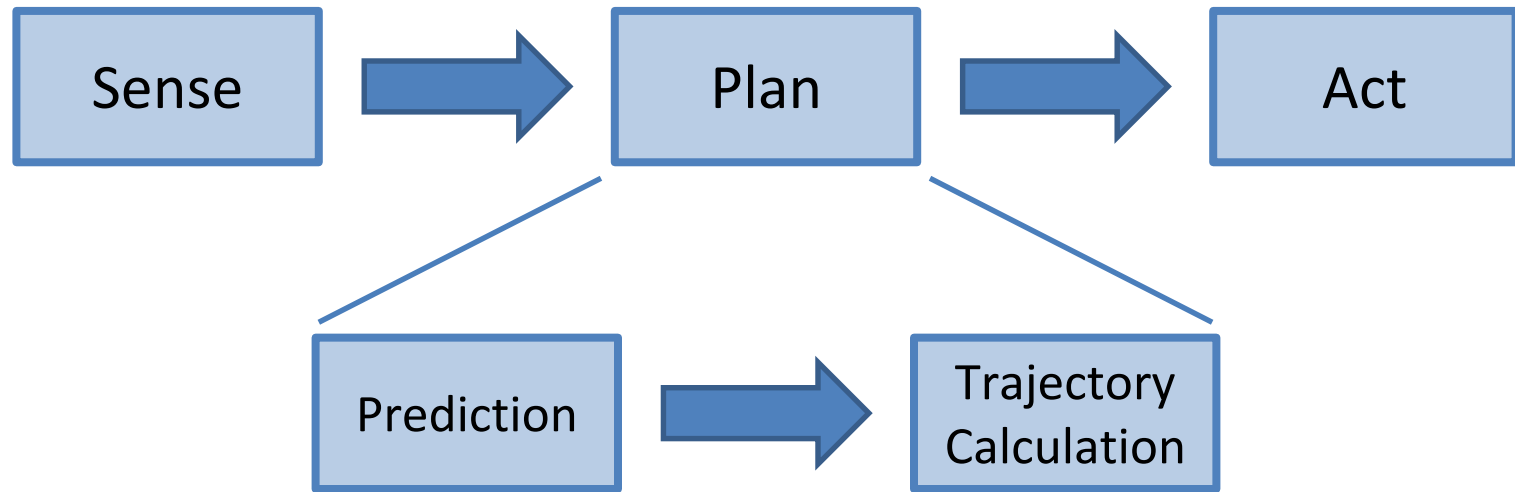
Modify lateral and  
longitudinal control  
to follow trajectory

# Challenge: Automated Driving



Plan: what are the intentions of nearby vehicles?

# Challenge: Automated Driving



Estimate/predict how vehicles will move

Calculate trajectory without collisions with static & dynamic objects

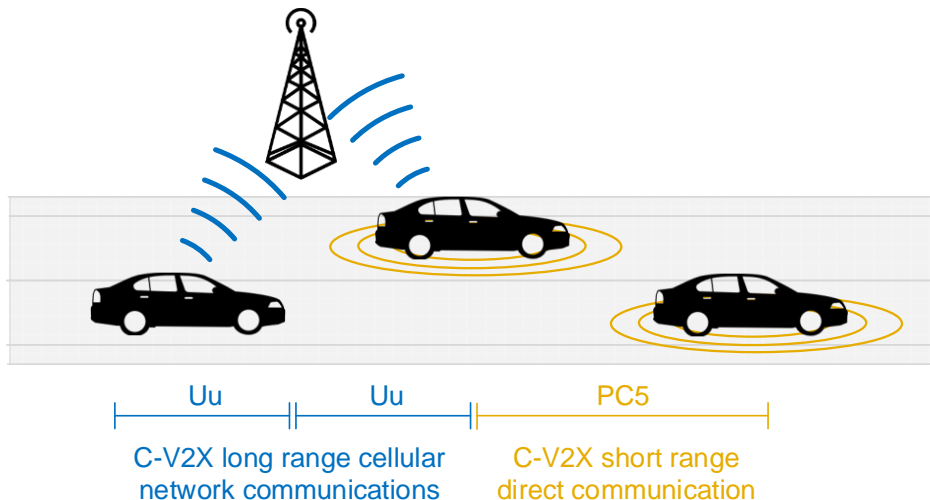


V2X: exchange data about driving maneuvers  
Cooperative driving or maneuver coordination



# V2X Connectivity: WiFi vs Cellular

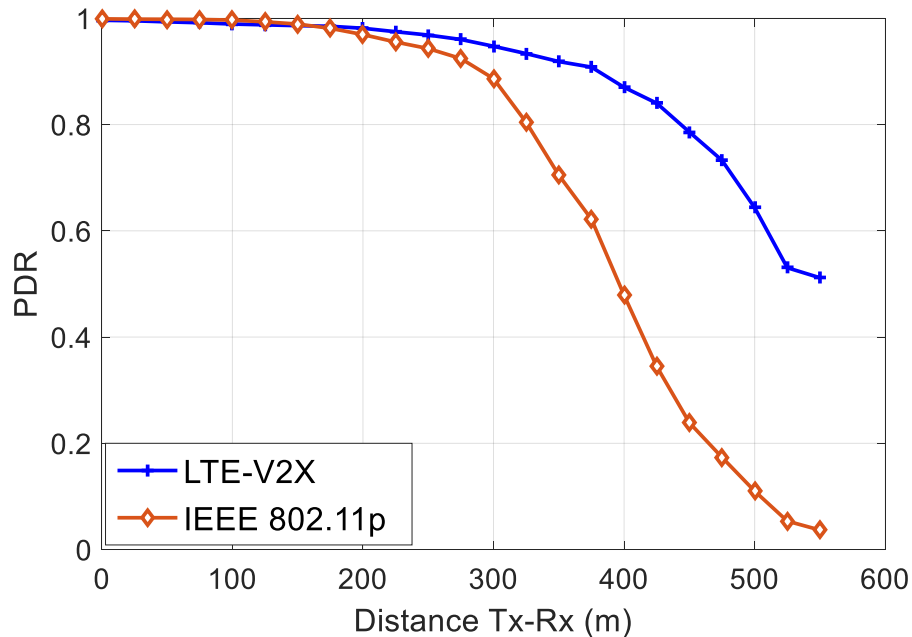
- IEEE 802.11p (WiFi): adaptation of IEEE 802.11a
  - Standards: ETSI ITS-G5 (EU), DSRC (US)
- Cellular: 2 transmission modes for 4G LTE-V2X (C-V2X)
  - V2I and V2V sidelink or direct communications



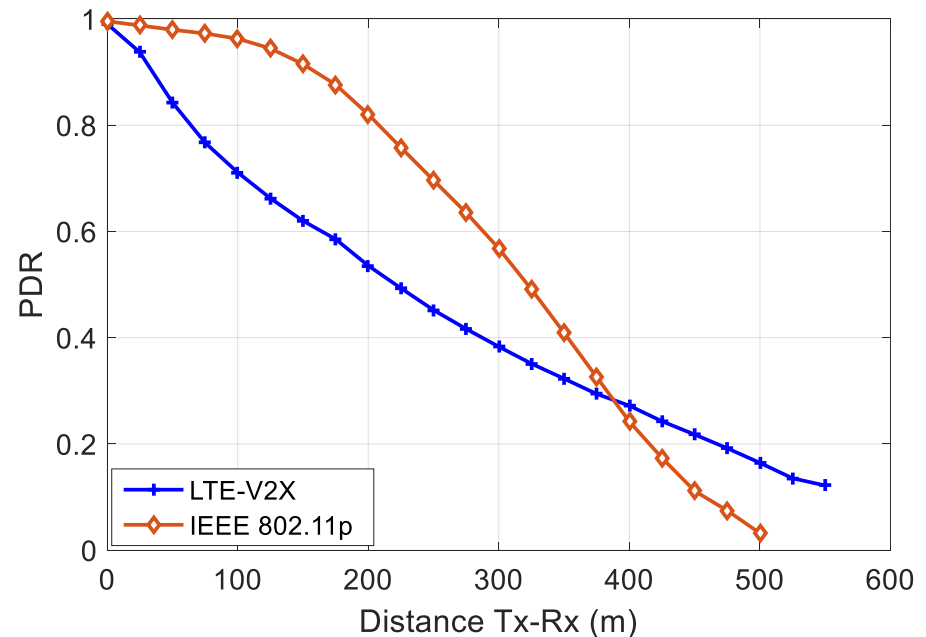
V2V: mode 4 and mode 3

# V2X Connectivity: WiFi vs Cellular

- Better PHY layer of LTE-V2X
- Packet Delivery Ratio (system-level): 802.11p vs LTE-V2X mode 4



Traffic: periodic (200ms) & size of 190bytes  
Low channel load (CBR ~0.1)



Aperiodic traffic  
Moderate/high channel load (CBR ~0.39-0.48)

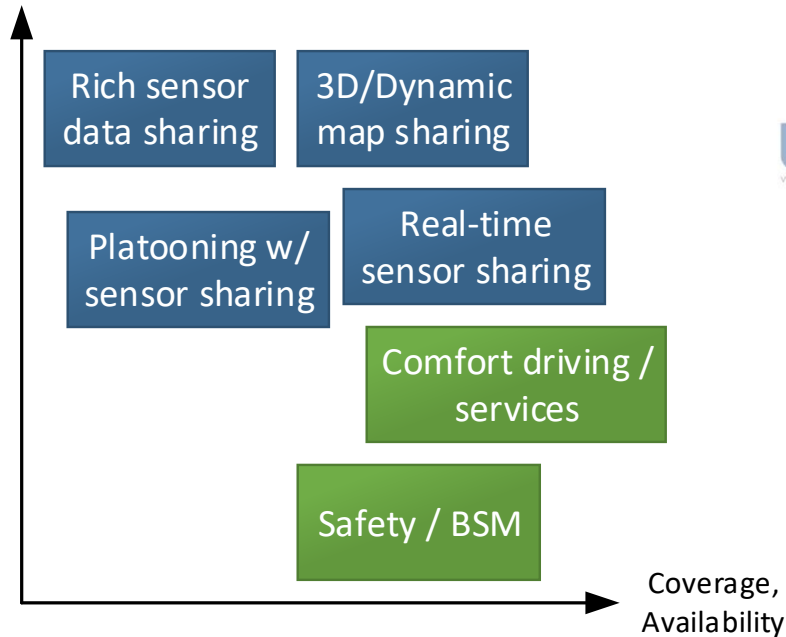
CAR 2 CAR Communication Consortium, "Survey on ITS-G5 CAM statistics," Dec. 2018.

# V2X Connectivity: WiFi vs Cellular

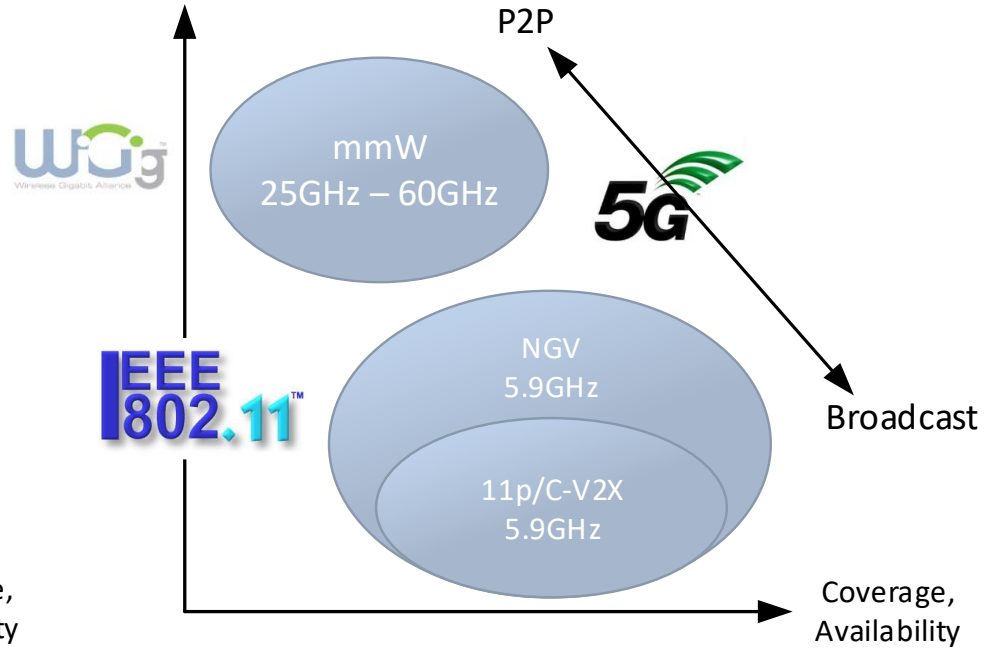
- Worldwide deployments
  - IEEE 802.11p: ~120,000 units sold as (May 2018, IHS Market)
    - Toyota in Japan (2015), GM in US (2017), Volkswagen in Europe ( 2019)
  - C-V2X chipsets available since 2018
    - In-vehicle commercial deployment from 2020 (source 5GAA)
- Delegated Act on C-ITS voted down by EU member states
  - Hybrid communication: ITS-G5 for short range and long range V2I
  - Technology neutrality

# Roadmap

Data rate, Accurate  
positioning



Data rate, Accurate  
positioning



Interoperability and coexistence versus performance

V2X roadmap = vehicular roadmap

V2X ecosystem: problem or opportunity?