

Cargo 1492

“It’s not the technology that changes the world. It’s the dreams behind the technology that change the world.”

Jack Ma, Executive Chairman Alibaba

How to Revitalise Rail Freight with Digitalisation?

18th Florence Rail Forum, November 8th 2019
Alfred Pitnik



Rail Cargo Group is one of the leading rail logistics companies in Europe...



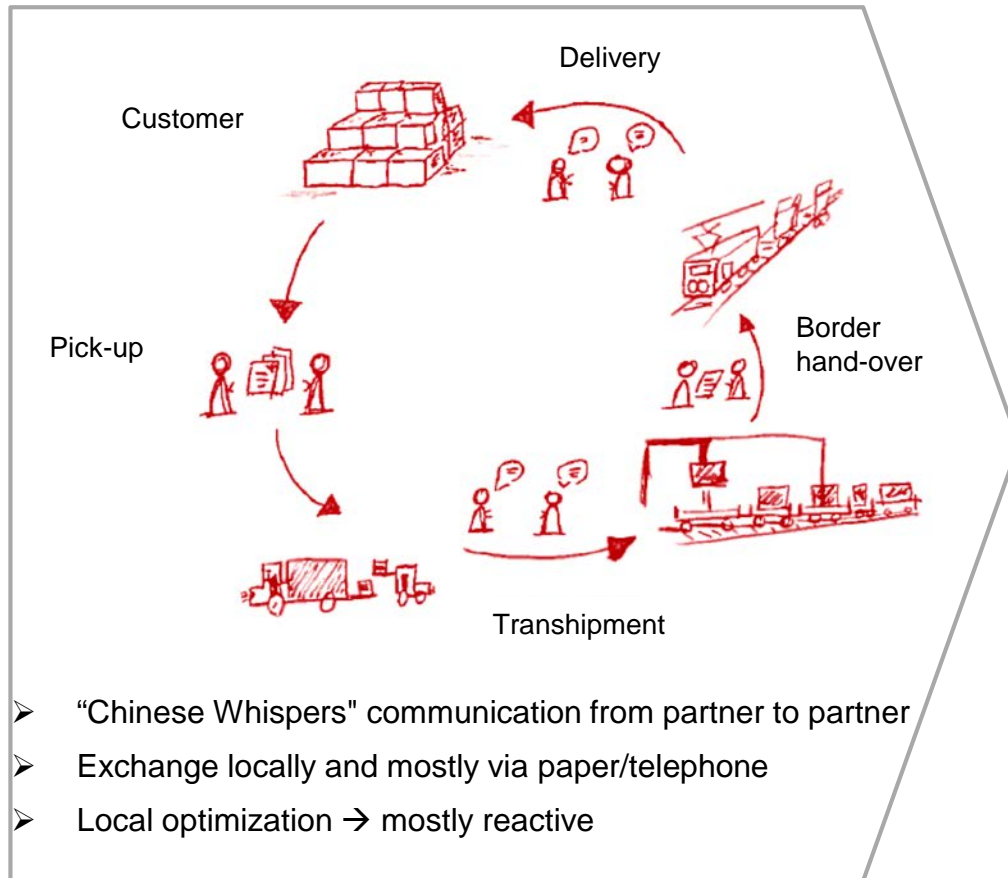
1 Why Cargo1492

2 What is Cargo1492 about?

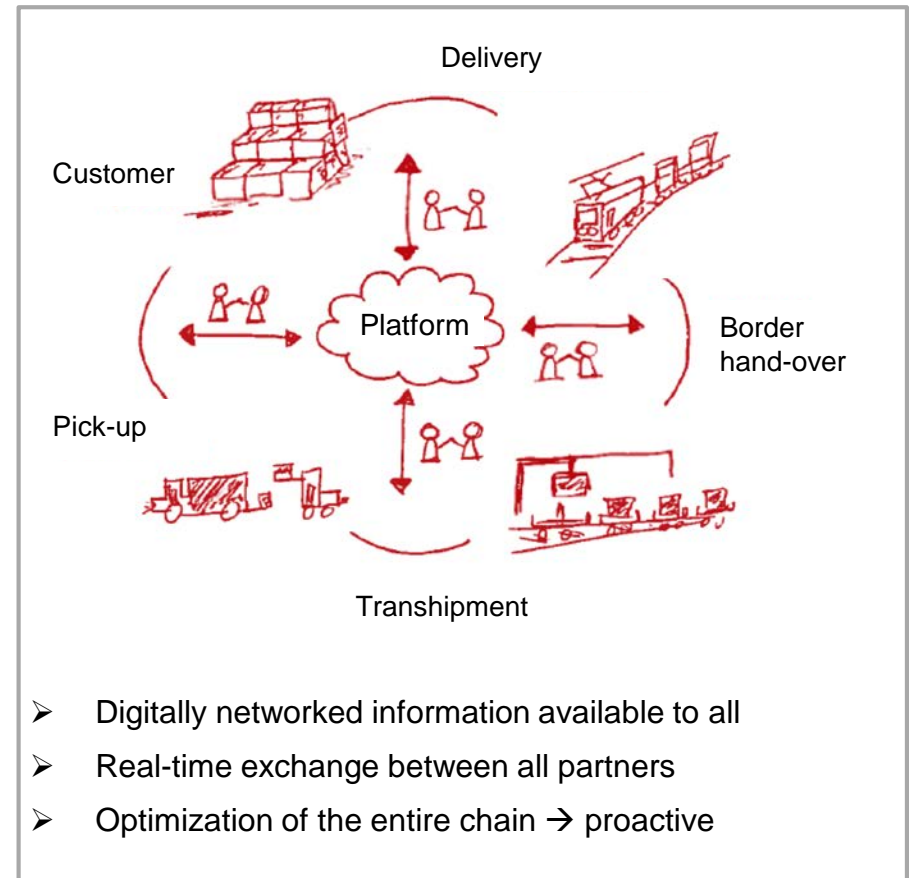
3 Implementation | Prototypes | Rail Freight Forward

What can digitalization do for logistics?

Analog logistics chain



Digital logistics chain



1

Why Cargo1492

2

What is Cargo1492 about?

3

Implementation | Prototypes | Rail Freight Forward

Our digitization project is Cargo1492

CARGO1492



our answer to Digitization

analogous to Columbus on to new shores

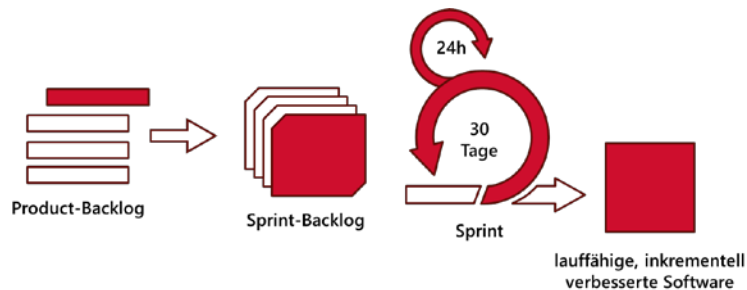


CULTURAL-CHANGE

more than an IT-Project

make the complicated easy

And break-up historical problem areas



latest methods of implementation

modular, agile and customer-oriented

to attract the talents of tomorrow

- 1 Why Cargo1492
- 2 What is Cargo1492 about?
- 3 Implementation | Prototypes | Rail Freight Forward**

Modern Design

Filter

Filters...

- Von
- Nach
- Zugestellt
- Aktuell
- Absender
- Empfänger
- Ladegut(nbm)

Filter

Nach: villach Leoben Donau

FRACHTBRIEFNR LIEFERSCHEINNR WAGEN NR	VERSAND BHF EMPFANGS BHF	STATUS
1035783606	Leoben Donawitz VILLACH SÜD	VILLACH SÜD 07.01.2019 01:01
11-11-1111- 111-1	VILLACH SÜD	01:01
1072368091	Leoben Donawitz VILLACH	
11-11-1111-		

Sendungsstatus Ändern

- DELAYED
- AT_RISK
- ON_TIME

Massnahme

Sendungsstatus Ändern

Bitte füllen Sie die folgenden Felder aus, um eine neue Statusmeldung für die aktuelle Sendung zu erstellen

ON_TIME

Weitere Informationen (Sie können jene auch öffentlich schalten)

Betriebsplanung / Betriebsführung - Sonstiges

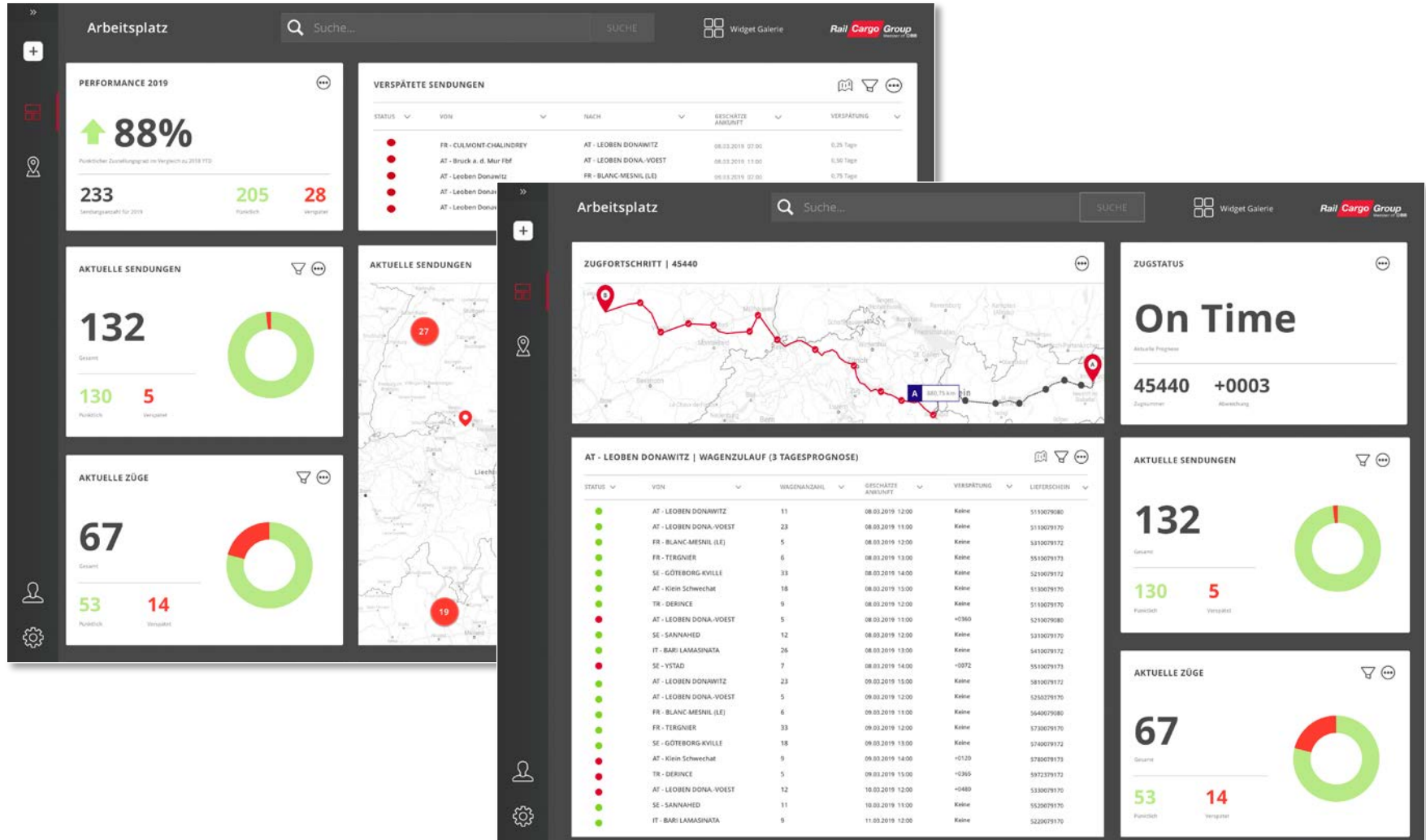
Sendung wieder pünktlich - Test - Lukas & Jakob

Öffentlich

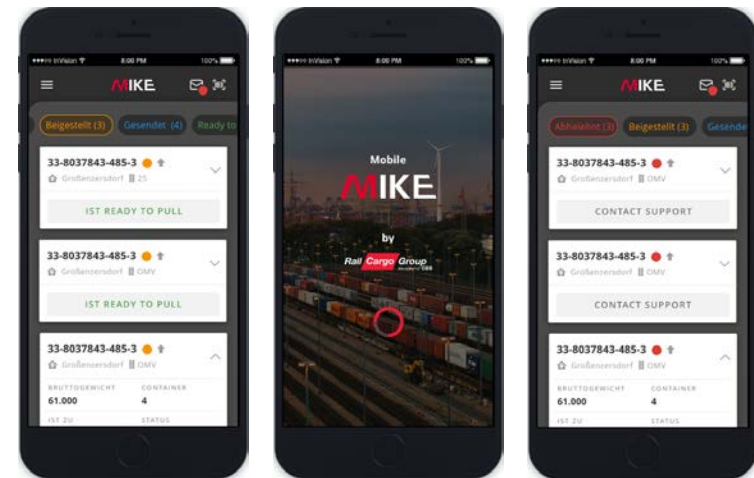
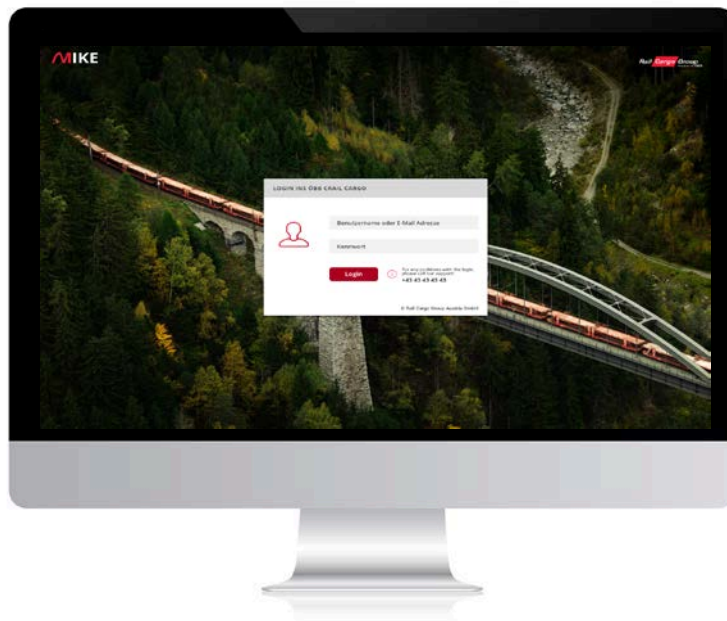
STATUS ÄNDERN


Sendungen werden geladen

Prototype Module: Shipment Tracking



How does it look?



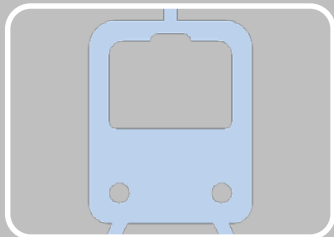
 iOS and Android

Work programme alignment with Rail Freight Forward



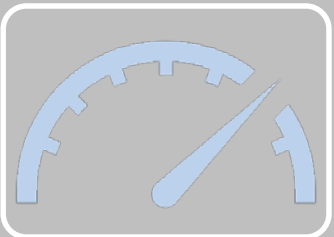
Intelligent wagon (e-wag)

- Functional specification and guidelines for interoperable sensors and telematic devices for wagons and intra-train communications



Rolling stock data exchange

- Business case and implementation plan for connecting to the rolling stock data broker
- Strategic deployment plan /roll out plan for the GCU members



ETA

- Identification and development of a software platform
- Pilot for aggregation of forecasts for segments in route